

The Equity Engineering Group, Inc. prides itself on producing quality software products. As with any software product, there are times when it does not seem to the user that the software is functioning in the way the user anticipates. Our Scarab Software Issue tracking system, provides our software customers with a quick and convenient process to alert E²G to any bugs in our software products. This site can be used for all of the software products developed and distributed by E²G :

- VCESage,
- API RBI Version 7.0, and
- VCEDamageMechanisms.

1 LOGGING SOFTWARE BUGS

- 1) To access Scarab go to site <http://208.40.63.53/scarab/issues/>.
- 2) You will see the following screen. You do not need to login simply select the hyperlink Global>Public

2 →

Name	Description
Global > API RBI	The API RBI Product
Global > Public	Public module for issue entry
Global > VCE Sage	The VCE Sage Product

© 2001-2005 CollabNet | Scarab 1.0-b20-200509191227

- 3) On the left side of the screen, you will see - Enter new issue. Select that hyperlink

3 →

Name	Description	Templates
Defect	Defect Description	None

© 2001-2005 CollabNet | Scarab 1.0-b20-200509191227

- 4) You can enter the information for a new issue here. Because the same form is used for all software products, some fields may not apply to the software product in question or you may not have all of the information listed. If the field does not apply or if you do not have the information for optional fields then simply skip those fields. Required fields are marked with an asterisk. The most important information is your name, phone number and email address so that an E²G contact person can get in touch with you help resolve the issue.

Scarab: Enter issue - Mozilla Firefox

File Edit View Go Bookmarks Tools Help

http://208.40.63.53/scarab/issues/curmodule/100/tq/0/template/entry%2CWizard1.vm/curit/1/eventssubmit_dostart/for

Customize Links Free Hotmail Windows Media Windows

scarab

Modules > Global > Public Login

Issue tracking home

- Enter new issue
- Enter new defect
- Reports

How do I...?

- Get help with Scarab?
- Enter and manage issues?
- Search for issues?
- Learn more about reports?
- Find out more about using Scarab?
- Get to the FAQ?
- Find out about Scarab terminology?

Defect Details Entry (* indicates required fields)

* Name

* Company

* Email Address

* Phone Number

* Summary

Status Choose...

Type of Database Choose...

Type of Error Choose...

Type of Installation Choose...

* Version Reported

* Product Choose...

VCE Sage Module

Next Reset

- 5) When finished with the first screen press the Next button.

- 6) You will see the information that you have already submitted as well as additional fields. If you can complete the information, please do so. If you would like to include an attachment, then use the Browse button to locate the attachment, complete the Description field, and press the Add Attachment button. When you have finished adding your information then simply press the Submit Issue button.

Firefox

Http://208.40.63.53/scarab/issues/cumodule/100/issue/0/h/0/template/entry%12CWard1.vm/action/ReportIssue

Issue ID: [] New and saved queries... [] Text search [] Login

Submit Issue [] Reset []

Defect Details Entry (* indicates required fields)

* Name	mary
* Company	w2g
* Email Address	mebuchi@equityeng.com
* Phone Number	216-283-6018
* Summary	Test issue for site
Status	New
Type of Database	MySQL
Type of Error	Form
Type of Installation	Local
* Version Reported	7.00.0010
* Product	API-RBI Product
VCL: Sage module	

Environment Details Entry (* indicates required fields)

Defect Type	External
Computer Operating System	w2k
Computer RAM	512
Computer Speed	2
Network Speed	100Mb/s
Server Location	SVR @ DE unknown
Server Operating System	unknown
Server RAM	unknown
Server Speed	unknown
Version Target	
Description	this is a test issue for scarab

Attachments

Add attachment

* attachment fields are only required if the Path is set

Path: [path to your attachment] [Browse...]

Click "Browse" and select a file. If you do not see a "Browse" button, your browser does not support file uploads. Windows users, set Files of Type: to be All Files (*.*) to get a complete file listing. The File field cannot be used to rename files.

* Description: you need to complete this description if you have an attachment.

* Type: Auto-detect []
Other (enter mime type: [])

Add attachment []

Submit new Issue

Reason: []

After submit: [Enter new issue] []

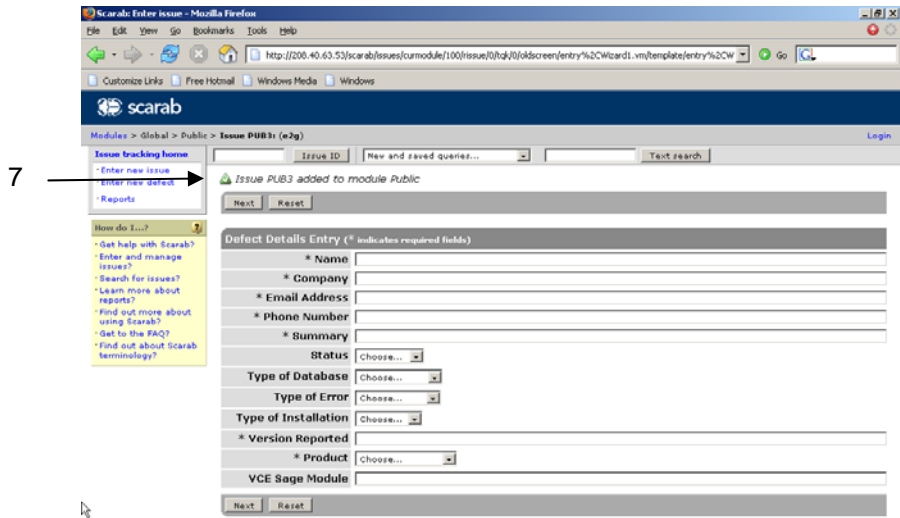
Submit Issue [] Reset []

URL: 1.0-b20-200509191227

6



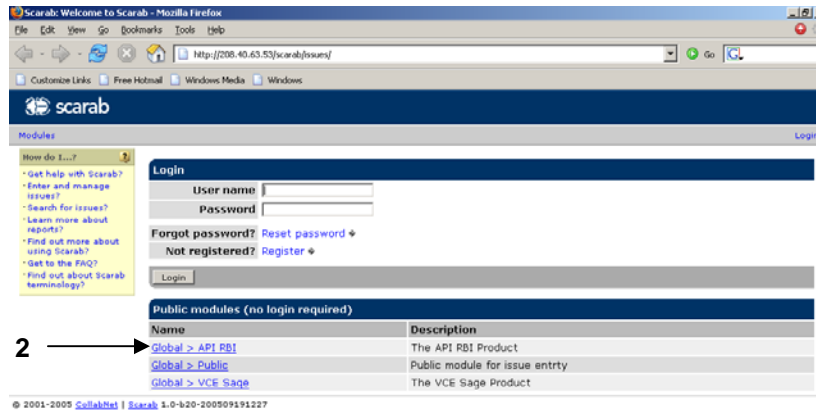
- 7) You will be returned to the add defect screen but with a message indicating that your issue has been added to Scarab.



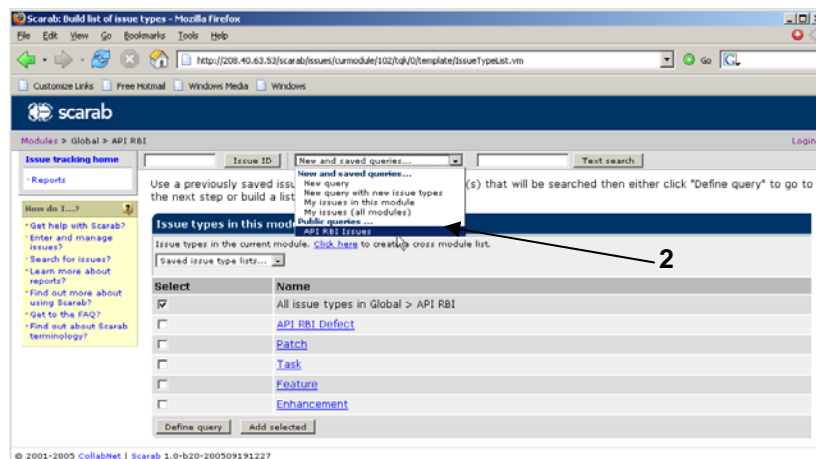
2 TRACKING SOFTWARE BUGS

When you have submitted a bug via the Scarab system, you can return to the site to track the bug.

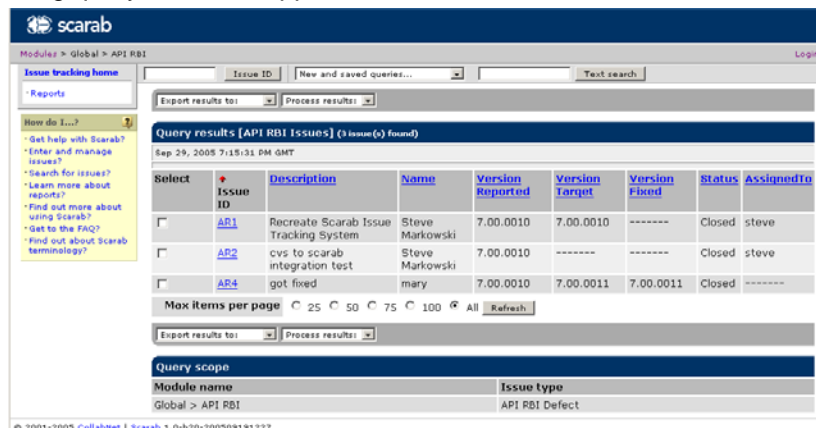
- 1) You do not need to login simply select the hyperlink for the software product you are interested in viewing. For example go to Global>API RBI



- 2) From the drop down list that begins New and saved queries select Public Queries – API RBI Issues



- 3) The following query result will appear.



4) Clicking on the Issue ID field will display details about the issue. .

Issue ID | New and saved queries... | Text search

[Previous](#) | 3 of 3 | [View all issues](#)

Attributes | Personnel | 1 Comments | Dependencies | Attachments/URLs | History

Issue ID AR1 (API RBI Defect)

Created by [Scarab_anonymous](#) Sep 23, 2005 3:18:08 PM GMT

Last modified by [Mary_Buchheim](#) Sep 23, 2005 3:24:36 PM GMT

Defect Report (* indicates required fields)

Name	mary
Company	e2g
Email Address	mbuchheim@equityeng.com
Phone Number	123-456-7890
Summary	test
Version Reported	7.00.0010
Type of Database	MYSQL
Type of Error	Report
Status	Closed
Resolution	Fixed
Version Target	7.00.0011
Version Fixed	7.00.0011
Description	got fixed

Environment (* indicates required fields)

Type of Installation	Local
Computer Operating System	who knows
Computer RAM	512
Computer Speed	2
Server Operating System	windows xp
Server RAM	1g
Server Speed	2
Server Location	SVR @ DB Same Backbone

ISS | ATOM | [SessionInfo-Free Link to AB4](#)