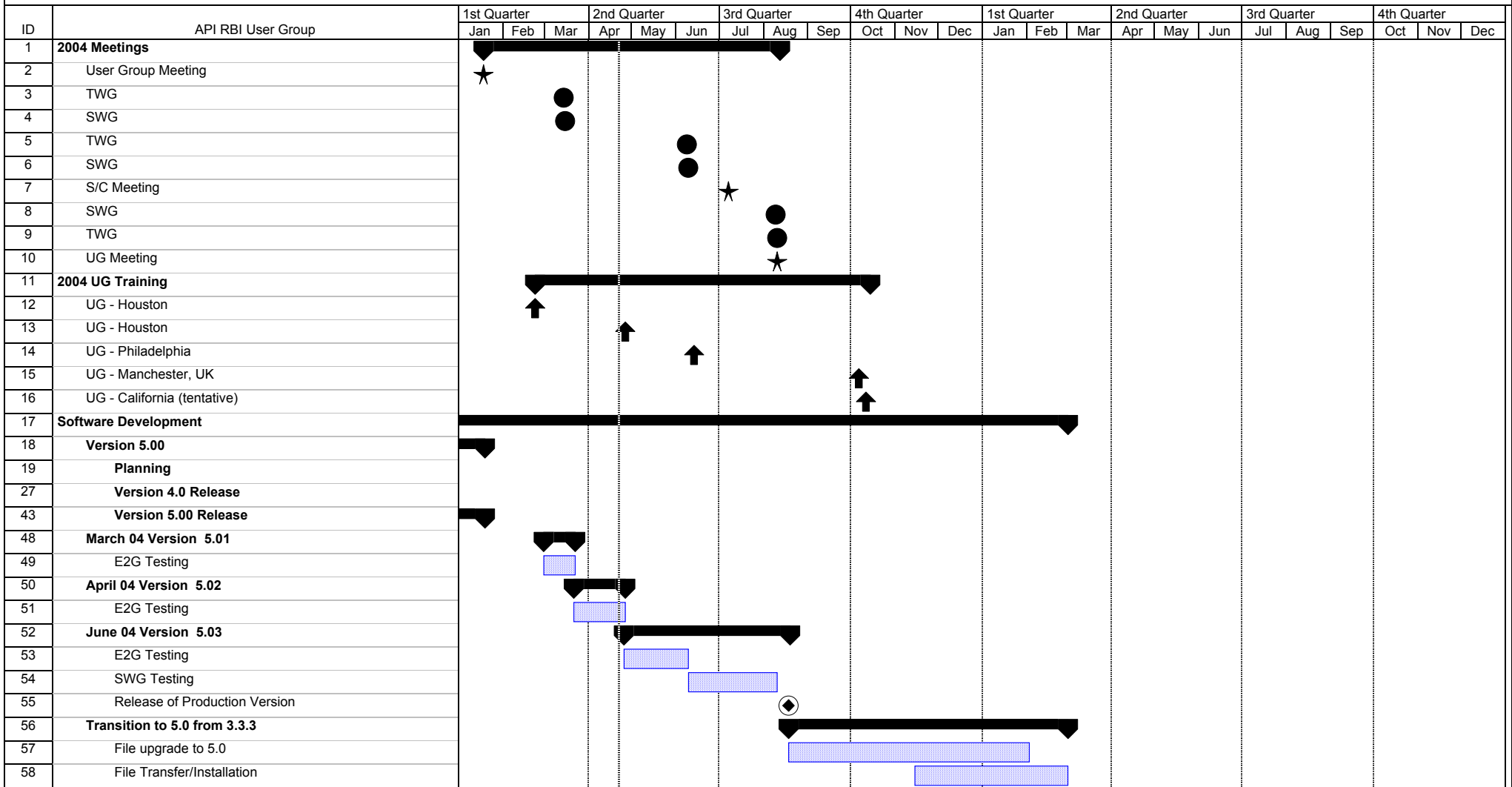


E2G Project Plan r8.mpp



E2G Project Plan r8.mpp

ID	API RBI User Group	1st Quarter			2nd Quarter			3rd Quarter			4th Quarter			1st Quarter			2nd Quarter			3rd Quarter			4th Quarter		
		Jan	Feb	Mar	Apr	May	Jun	Jul	Aug	Sep	Oct	Nov	Dec	Jan	Feb	Mar	Apr	May	Jun	Jul	Aug	Sep	Oct	Nov	Dec
59	Additional Module/Capabilities	[Summary bar for Additional Module/Capabilities]																							
60	Case Structure	[Summary bar for Case Structure]																							
61	Database Modification	[Task bar for Database Modification]																							
62	Testing	[Task bar for Testing]																							
63	Case in 6.02	[Task bar for Case in 6.02]																							
64	Cost Benefit with Repair/Replace Option	[Summary bar for Cost Benefit with Repair/Replace Option]																							
65	Programming of CBA into 6.02	[Task bar for Programming of CBA into 6.02]																							
66	Technical Documentation of CBA	[Task bar for Technical Documentation of CBA]																							
67	CBA in 6.02	[Task bar for CBA in 6.02]																							
68	Develop New Consequence Modeler	[Summary bar for Develop New Consequence Modeler]																							
69	Logic Development	[Task bar for Logic Development]																							
70	Property Database (NIST)	[Task bar for Property Database (NIST)]																							
71	Develop Post-Processing	[Task bar for Develop Post-Processing]																							
72	Documentation Consequence Modeler	[Task bar for Documentation Consequence Modeler]																							
73	Programming into 6.0	[Task bar for Programming into 6.0]																							
74	Consequence Modeler in 6.0	[Task bar for Consequence Modeler in 6.0]																							
75	Software Security	[Summary bar for Software Security]																							
76	Add Software Security the API RBI Software	[Task bar for Add Software Security the API RBI Software]																							
77	Add User Security to API RBI Software	[Task bar for Add User Security to API RBI Software]																							
78	Port API Software to Access & MySQL Server	[Task bar for Port API Software to Access & MySQL Server]																							
79	Port API Software to MS SQL Server	[Task bar for Port API Software to MS SQL Server]																							
80	Port API Software to Oracle	[Task bar for Port API Software to Oracle]																							
81	Thinning RSF Approach	[Summary bar for Thinning RSF Approach]																							
82	Programming of RSF into 6.03	[Task bar for Programming of RSF into 6.03]																							
83	Technical Documentation of RSF	[Task bar for Technical Documentation of RSF]																							
84	RSF in 6.03	[Task bar for RSF in 6.03]																							
85	Damage Mechanism AI Screening Tool	[Summary bar for Damage Mechanism AI Screening Tool]																							
86	Materials Development work of DM AI Tool	[Task bar for Materials Development work of DM AI Tool]																							
87	Programming of DM AI Tool into 6.02	[Task bar for Programming of DM AI Tool into 6.02]																							
88	Technical Documentation of DM AI Tool	[Task bar for Technical Documentation of DM AI Tool]																							
89	Damage Mechanism AI Module in 6.02	[Task bar for Damage Mechanism AI Module in 6.02]																							
90	Improved Inspection Planning Module	[Summary bar for Improved Inspection Planning Module]																							
91	Write-up Description for Improved IP module	[Task bar for Write-up Description for Improved IP module]																							
92	Proposal Approval	[Task bar for Proposal Approval]																							
93	Documentation	[Task bar for Documentation]																							
94	Module in 6.03	[Task bar for Module in 6.03]																							
95	System/Area/Circuit in 6.01	[Summary bar for System/Area/Circuit in 6.01]																							
96	Database Modification	[Task bar for Database Modification]																							
97	Testing	[Task bar for Testing]																							
98	System/Area/Circuit in 6.01	[Task bar for System/Area/Circuit in 6.01]																							

E2G Project Plan r8.mpp

ID	API RBI User Group	1st Quarter			2nd Quarter			3rd Quarter			4th Quarter			1st Quarter			2nd Quarter			3rd Quarter			4th Quarter		
		Jan	Feb	Mar	Apr	May	Jun	Jul	Aug	Sep	Oct	Nov	Dec	Jan	Feb	Mar	Apr	May	Jun	Jul	Aug	Sep	Oct	Nov	Dec
99	Documentation/BRD Update	[Summary bar with arrowhead pointing right]																							
100	Update Schema	[Task bar]																							
101	BRD Update Proposal	[Task bar]																							
102	BRD Draft	[Task bar]																							
103	Ballot	[Task bar]																							
104	Ballot Resolution	[Task bar]																							
105	Revise Write-Up	[Task bar]																							
106	BRD Updated Release	[Task bar with diamond marker]																							
107	Corrosion Supplement Development	[Summary bar with arrowhead pointing right]																							
108	Soil/Underground Corrosion	[Task bar]																							
109	Cooling Water Corrosion	[Task bar]																							
110	Acid sour water	[Task bar]																							
111	Programming into 6.03	[Task bar]																							
112	Modules in 6.03	[Task bar with diamond marker]																							
113	CO2 Corrosion	[Summary bar with arrowhead pointing right]																							
114	Documents to Roland	[Task bar]																							
115	Issue Ballot	[Task bar]																							
116	Return Ballots	[Task bar]																							
117	Ballot Resolution	[Task bar]																							
118	Shell Data Review	[Task bar]																							
119	Reballot	[Task bar]																							
120	Return Ballots	[Task bar]																							
121	Document Revision	[Task bar]																							
122	Programming into 5.0	[Summary bar with arrowhead pointing right]																							
123	Programming	[Task bar]																							
124	Module in 6.03	[Task bar with diamond marker]																							
125	CUI Module Improvements	[Summary bar with arrowhead pointing right]																							
126	TWG Rewrite & Review	[Task bar]																							
127	Programming into 6.0	[Task bar]																							
128	Modules in 6.0	[Task bar]																							

E2G Project Plan r8.mpp

ID	API RBI User Group	1st Quarter			2nd Quarter			3rd Quarter			4th Quarter			1st Quarter			2nd Quarter			3rd Quarter			4th Quarter		
		Jan	Feb	Mar	Apr	May	Jun	Jul	Aug	Sep	Oct	Nov	Dec	Jan	Feb	Mar	Apr	May	Jun	Jul	Aug	Sep	Oct	Nov	Dec
129	Damage Modules	[Summary bar for Damage Modules]																							
130	Thermal Fatigue	[Summary bar for Thermal Fatigue]																							
131	Thermal Fatigue Write-Up	[Task bar]																							
132	Ballot	[Task bar]																							
133	Ballot Resolution	[Task bar]																							
134	Revise Write-Up	[Task bar]																							
135	Programming into 6.03	[Summary bar for Programming into 6.03]																							
136	Programming	[Task bar]																							
137	Module in 6.03	[Task bar]																							
138	Creep Damage Cracking	[Summary bar for Creep Damage Cracking]																							
139	Creep Damage Write-up	[Task bar]																							
140	Ballot	[Task bar]																							
141	Ballot Resolution	[Task bar]																							
142	Revise Write-Up	[Task bar]																							
143	Programming into 6.03	[Summary bar for Programming into 6.03]																							
144	Programming into 6.03	[Task bar]																							
145	Documentation	[Task bar]																							
146	Module in 6.03	[Task bar]																							
147	HHTA	[Summary bar for HHTA]																							
148	Proposal for UG	[Task bar]																							
149	Development of new C-1/2 Mo curve (MPC)	[Task bar]																							
150	Programming	[Task bar]																							
151	Module in 6.03	[Task bar]																							

E2G Project Plan r8.mpp

ID	API RBI User Group	1st Quarter			2nd Quarter			3rd Quarter			4th Quarter			1st Quarter			2nd Quarter			3rd Quarter			4th Quarter		
		Jan	Feb	Mar	Apr	May	Jun	Jul	Aug	Sep	Oct	Nov	Dec	Jan	Feb	Mar	Apr	May	Jun	Jul	Aug	Sep	Oct	Nov	Dec
152	Equipment Module Development	[Solid black bar from Jan to Mar]																							
153	Tank Module	[Solid black bar from Jan to Oct]																							
154	Ballot of AST	[Solid black bar from Jan to Oct]																							
155	TWG Ballot resolution	[Solid black bar from Jan to Oct]																							
156	Write-up Revision	[Solid black bar from Jan to Oct]																							
157	Reballot	[Solid black bar from Jan to Oct]																							
158	Tank Module Reballot	[Solid black bar from Jan to Mar]																							
162	Programming into 6.0	[Solid black bar from Apr to Sep]																							
163	Programming of Tank Module	[Blue hatched bar from Apr to Sep]																							
164	Tank Module in 6.0	[Diamond icon at end of bar from Apr to Sep]																							
165	HE Bundle Module	[Solid black bar from Jan to Oct]																							
166	Ballot of HE Bundle	[Solid black bar from Jan to Oct]																							
167	TWG Ballot resolution	[Solid black bar from Jan to Oct]																							
168	Write-up Revision	[Blue hatched bar from Jan to Feb]																							
169	Reballot	[Blue hatched bar from Feb to Mar]																							
170	HE Module Reballot	[Solid black bar from Jan to Apr]																							
171	Ballot Resolution	[Blue hatched bar from Mar to Apr]																							
172	Prototype of HE Module	[Blue hatched bar from Jan to Mar]																							
173	Documentation	[Blue hatched bar from Jan to Mar]																							
174	Programming into 6.0	[Solid black bar from Apr to Sep]																							
175	Revise Documentation	[Blue hatched bar from Apr to May]																							
176	Programming of HE Bundle into 6.0	[Blue hatched bar from Jun to Sep]																							
177	HE Module in 6.0	[Diamond icon at end of bar from Apr to Sep]																							

E2G Project Plan r8.mpp

ID	API RBI User Group	1st Quarter			2nd Quarter			3rd Quarter			4th Quarter			1st Quarter			2nd Quarter			3rd Quarter			4th Quarter		
		Jan	Feb	Mar	Apr	May	Jun	Jul	Aug	Sep	Oct	Nov	Dec	Jan	Feb	Mar	Apr	May	Jun	Jul	Aug	Sep	Oct	Nov	Dec
178	PRD Module	[Summary bar for PRD Module]																							
179	PRD Development	[Summary bar for PRD Development]																							
185	Review & Ballot	[Summary bar for Review & Ballot]																							
186	TWG Review	[Task bar]																							
187	TWG Review	[Task bar]																							
188	PRD Ballot	[Summary bar for PRD Ballot]																							
189	Ballot	[Task bar]																							
190	Return Ballots	[Task bar]																							
191	Ballot Resolution	[Task bar]																							
192	PRD Module in 6.01	[Summary bar for PRD Module in 6.01]																							
193	Documentation	[Task bar]																							
194	Programming into 6.01	[Task bar]																							
195	PRD in 6.03	[Task bar]																							
196	Boilers	[Summary bar for Boilers]																							
197	Ballot	[Task bar]																							
198	TWG Ballot resolution	[Task bar]																							
199	Write-up Revision	[Task bar]																							
200	Reballot	[Task bar]																							
201	Ballot resolution	[Task bar]																							
202	Revise Documentation	[Task bar]																							
203	Programming into 6.03	[Task bar]																							
204	Documentation	[Task bar]																							
205	Module in 6.03	[Task bar]																							
206	Fired Heater Module	[Summary bar for Fired Heater Module]																							
207	Fired Heater Write-up	[Task bar]																							
208	Ballot	[Task bar]																							
209	Return Ballots	[Task bar]																							
210	Ballot Resolution	[Task bar]																							
211	Revise Write-Up	[Task bar]																							
212	Programming into 6.03	[Summary bar for Programming into 6.03]																							
213	Programming into 6.03	[Task bar]																							
214	Documentation	[Task bar]																							
215	Module in 6.03	[Task bar]																							