

**Date of Issue:** July 2003

**Affected Publication:** API Standard 612, *Petroleum, Petrochemical and Natural Gas Industries—Steam Turbines—Special-purpose Applications*, Fifth Edition, April 2003

## ERRATA

Page 38, replace Figure 4 with the following:

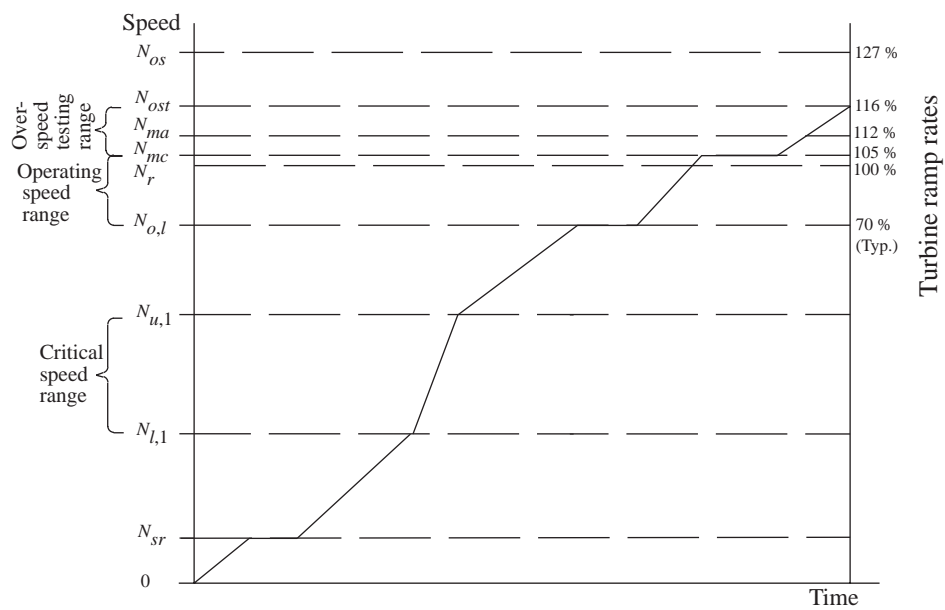
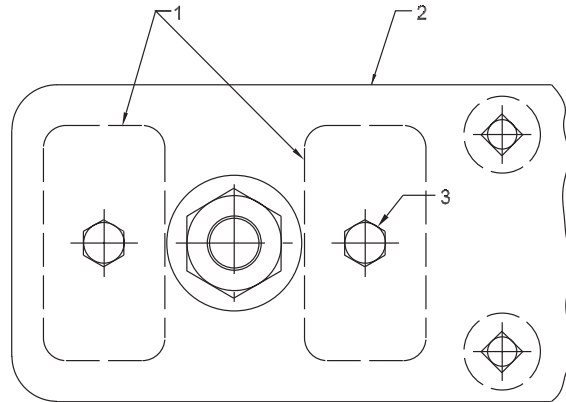
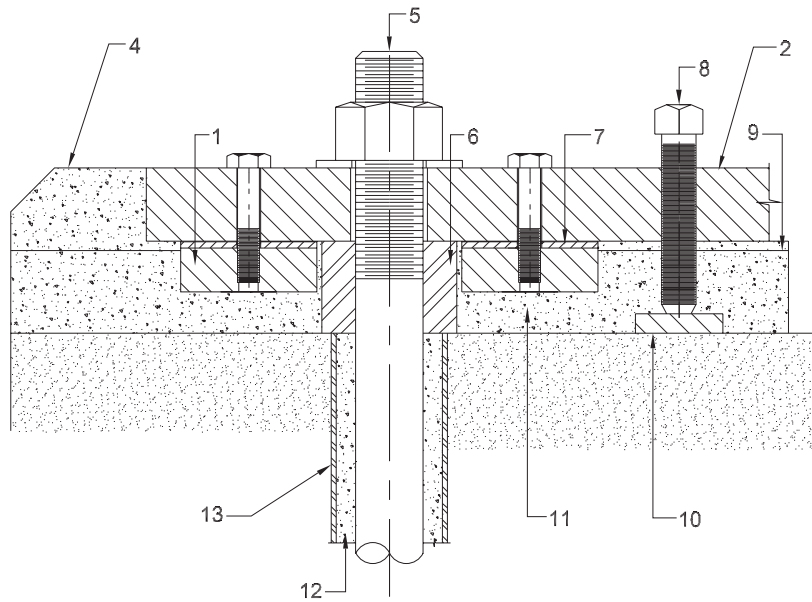


Figure 4 — Turbine ramp speeds

Page 97, replace Figure F.1 with the following:



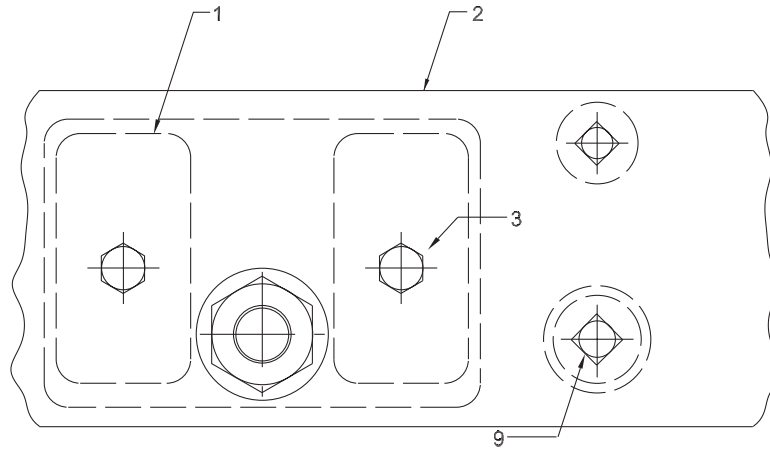
a) Top view of foundation at foundation bolt



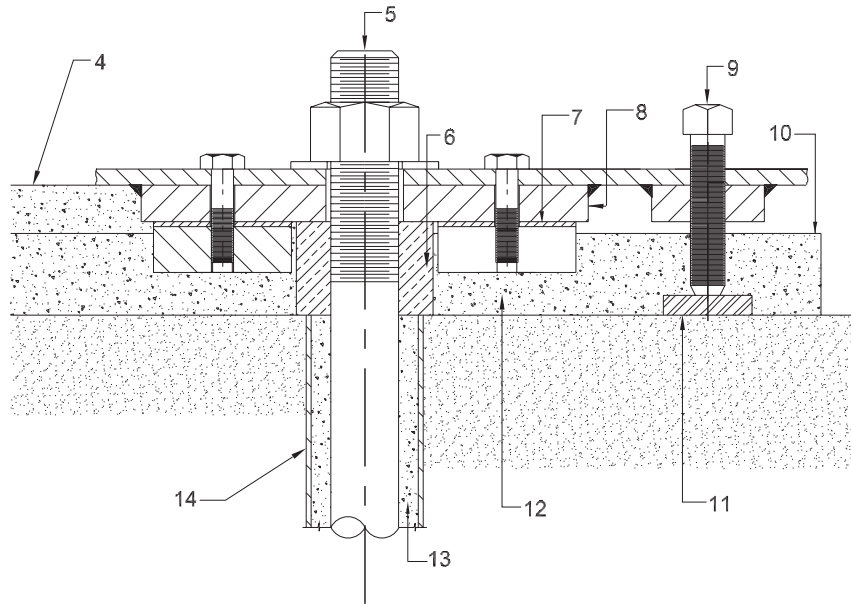
b) Cross-section of foundation at foundation bolt

Figure F.1 — Typical mounting plate arrangement — Soleplate with subplate

Page 98, replace Figure F.2 with the following:



a) Top view of foundation at foundation bolt



b) Cross-section of foundation at foundation bolt

Figure F.2 — Typical mounting plate arrangement — Baseplate with subplate

Page 101, replace Figure G.1 with the following:

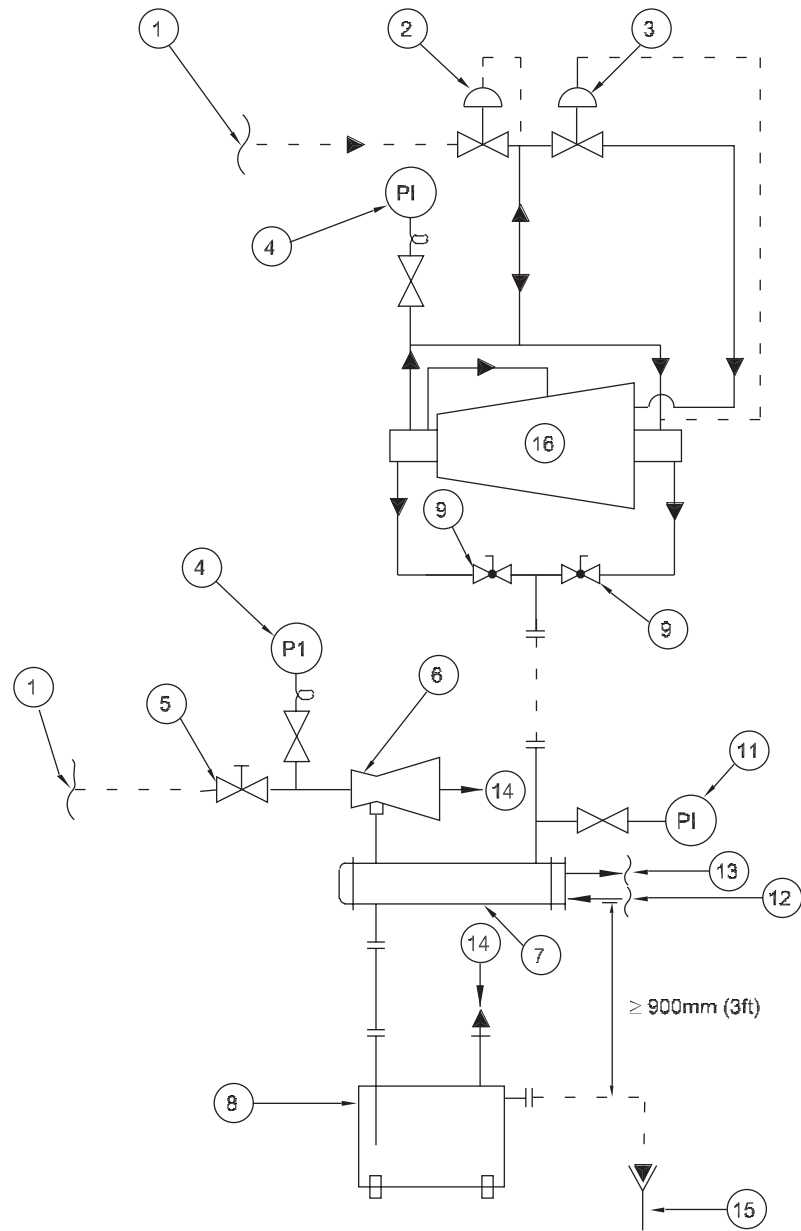


Figure G.1 — Typical gland sealing and leak-off system for condensing turbines

Page 102, replace Figure G.2 with the following:

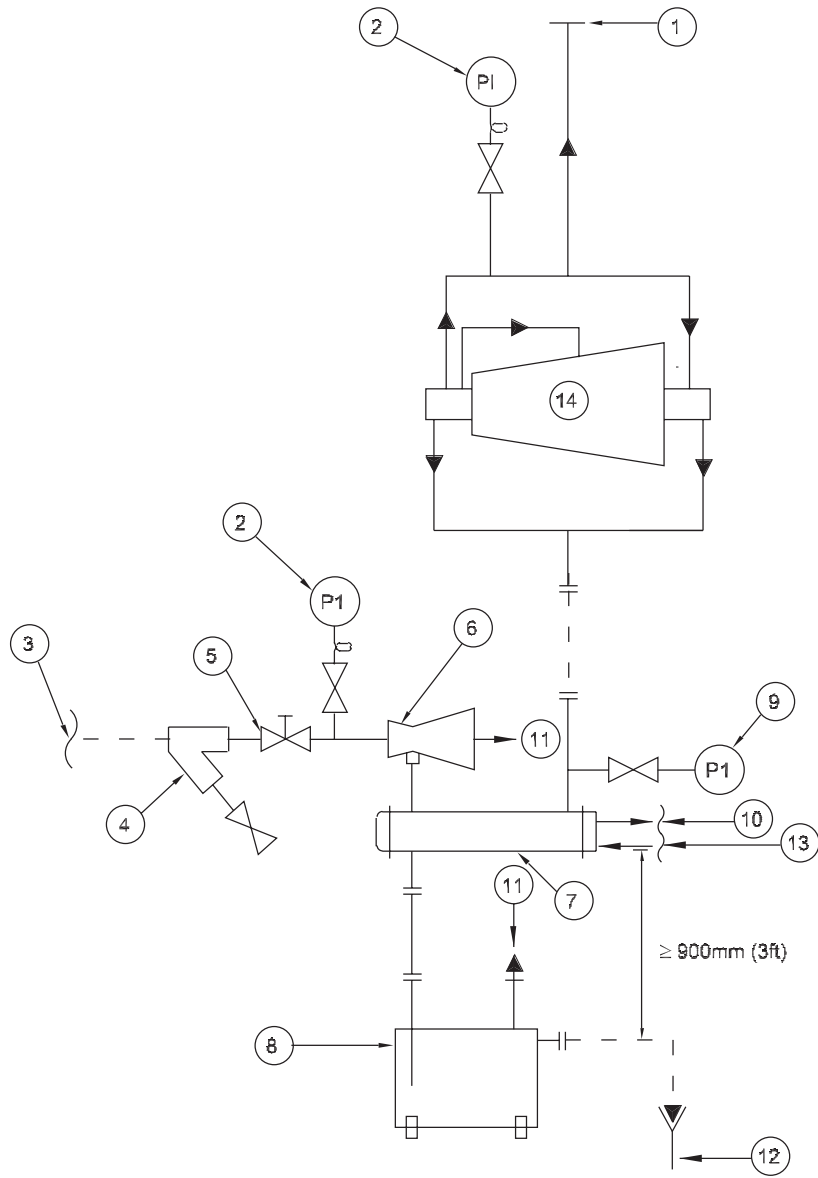


Figure G.2 — Typical gland leak-off system for back-pressure turbines

