

LEVEL

0

1

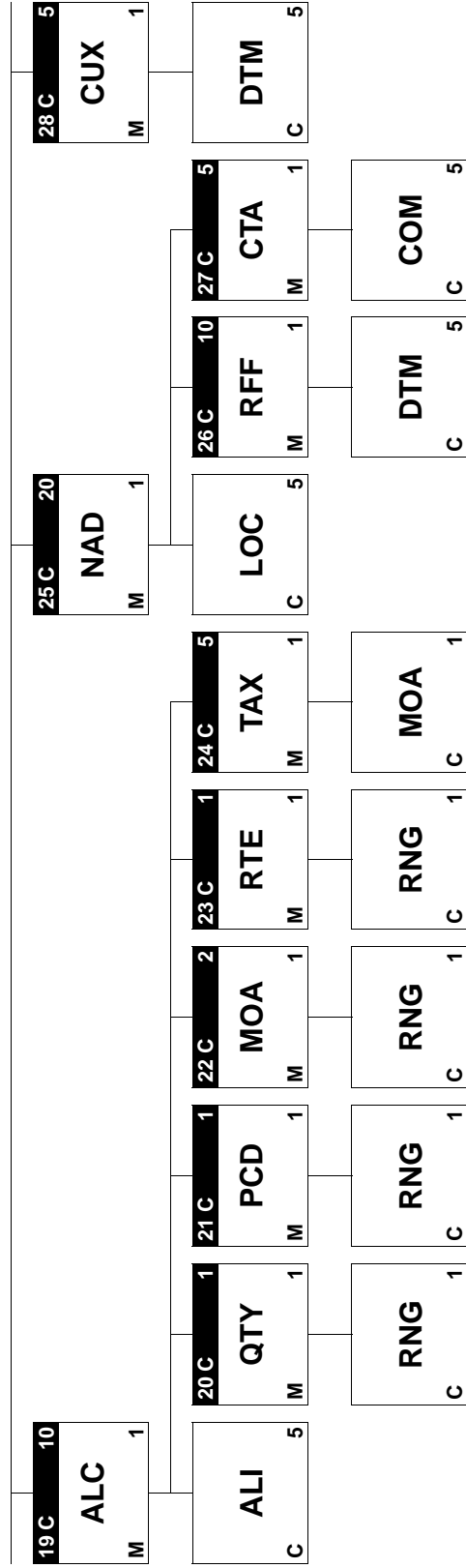
2

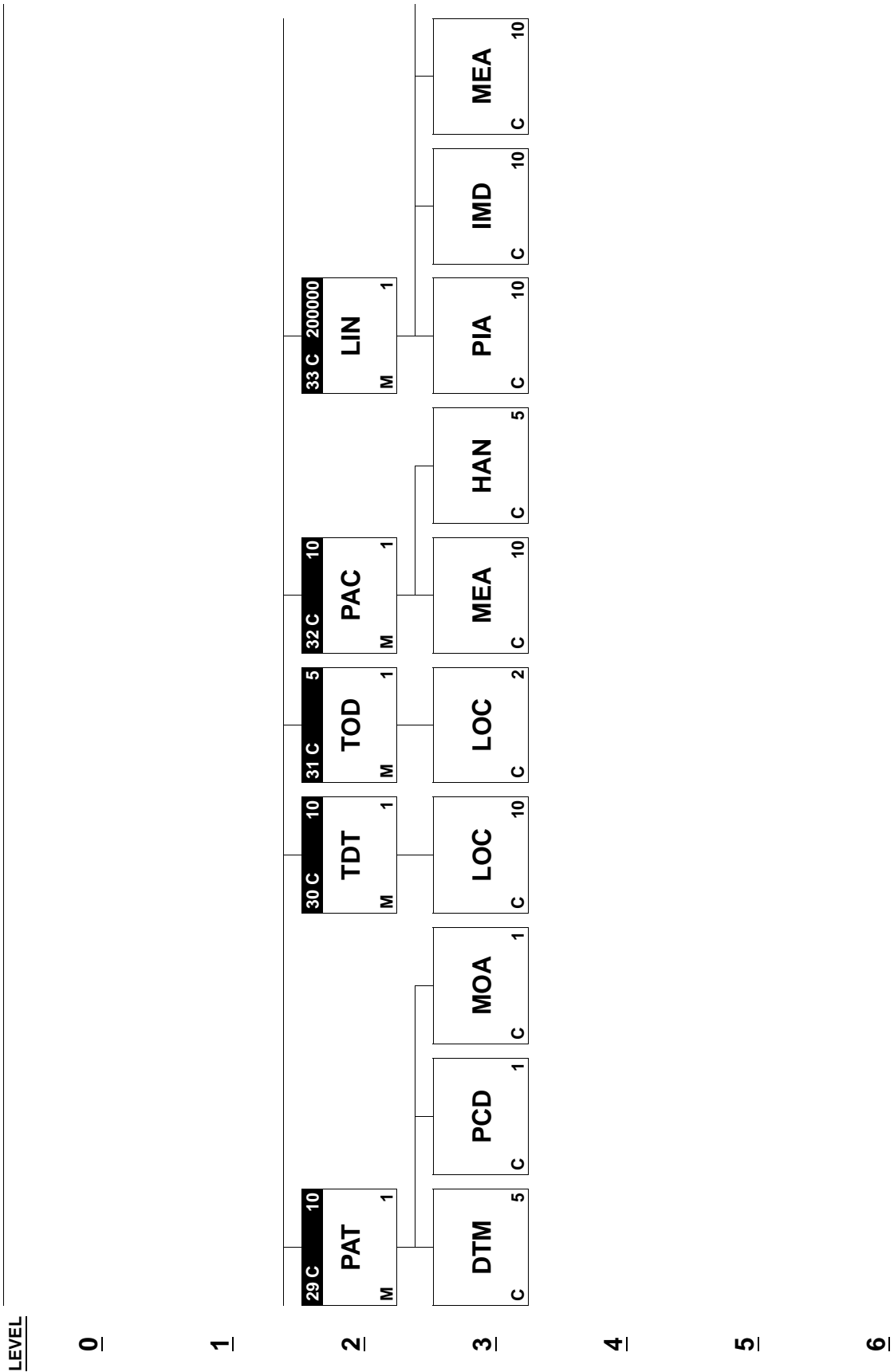
3

4

5

6





LEVEL

0

1

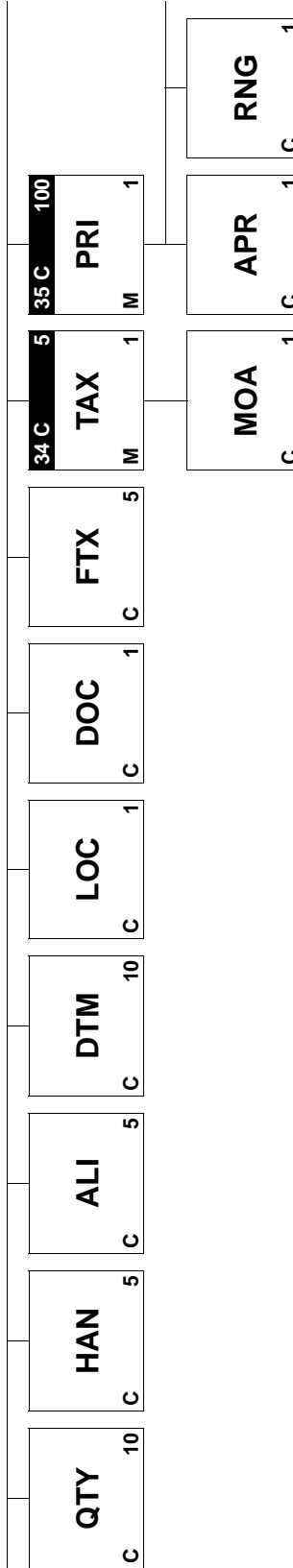
2

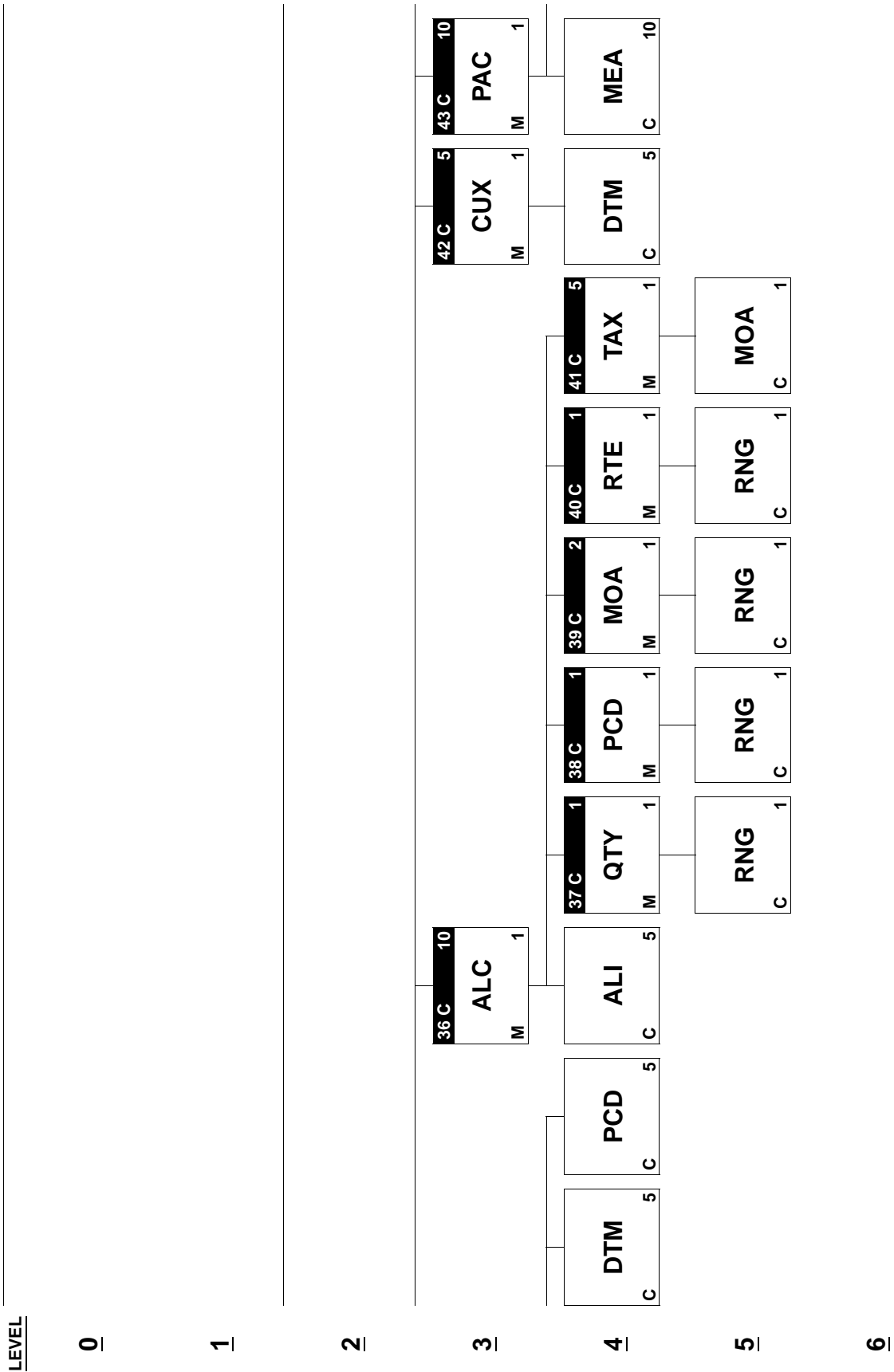
3

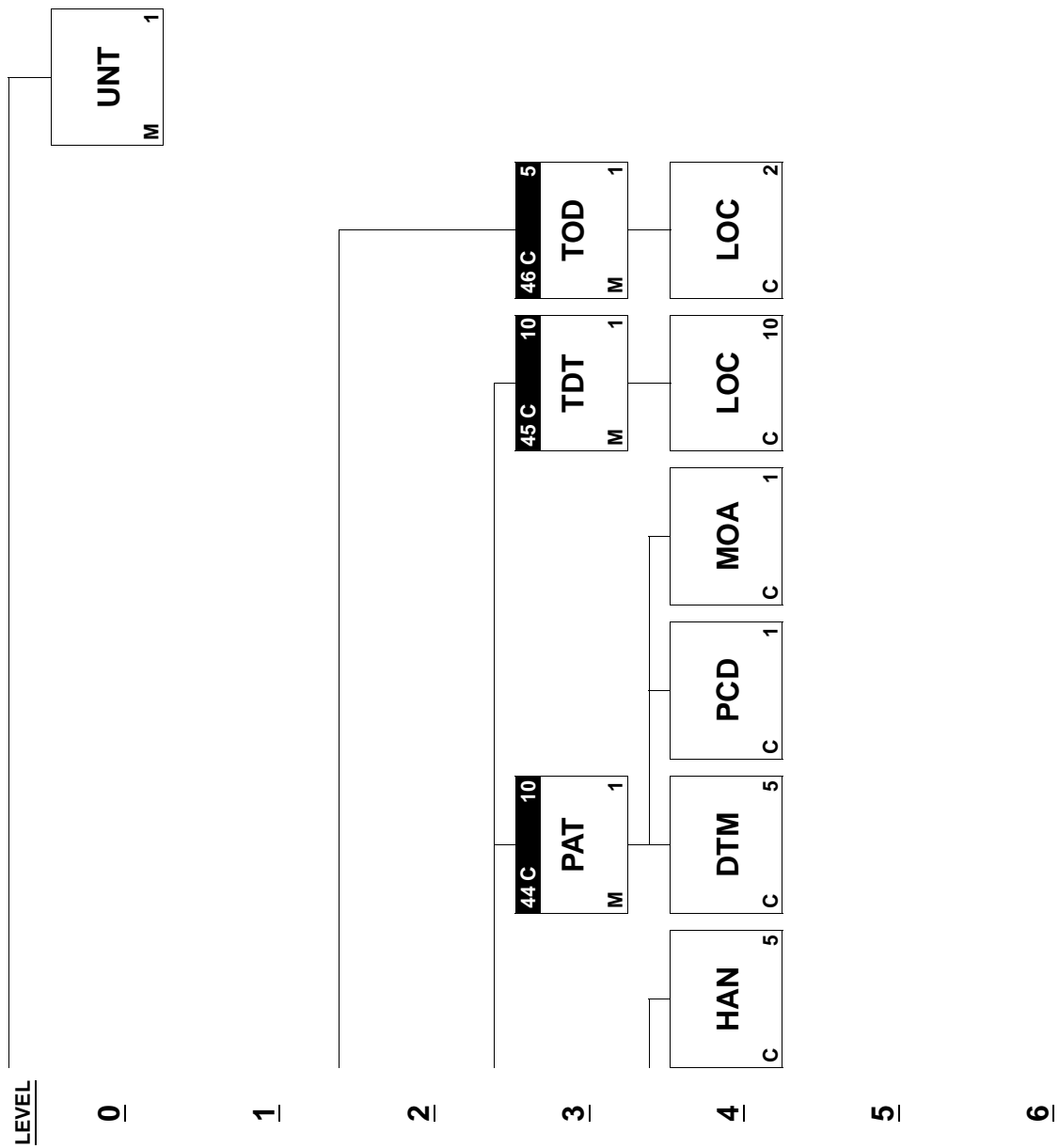
4

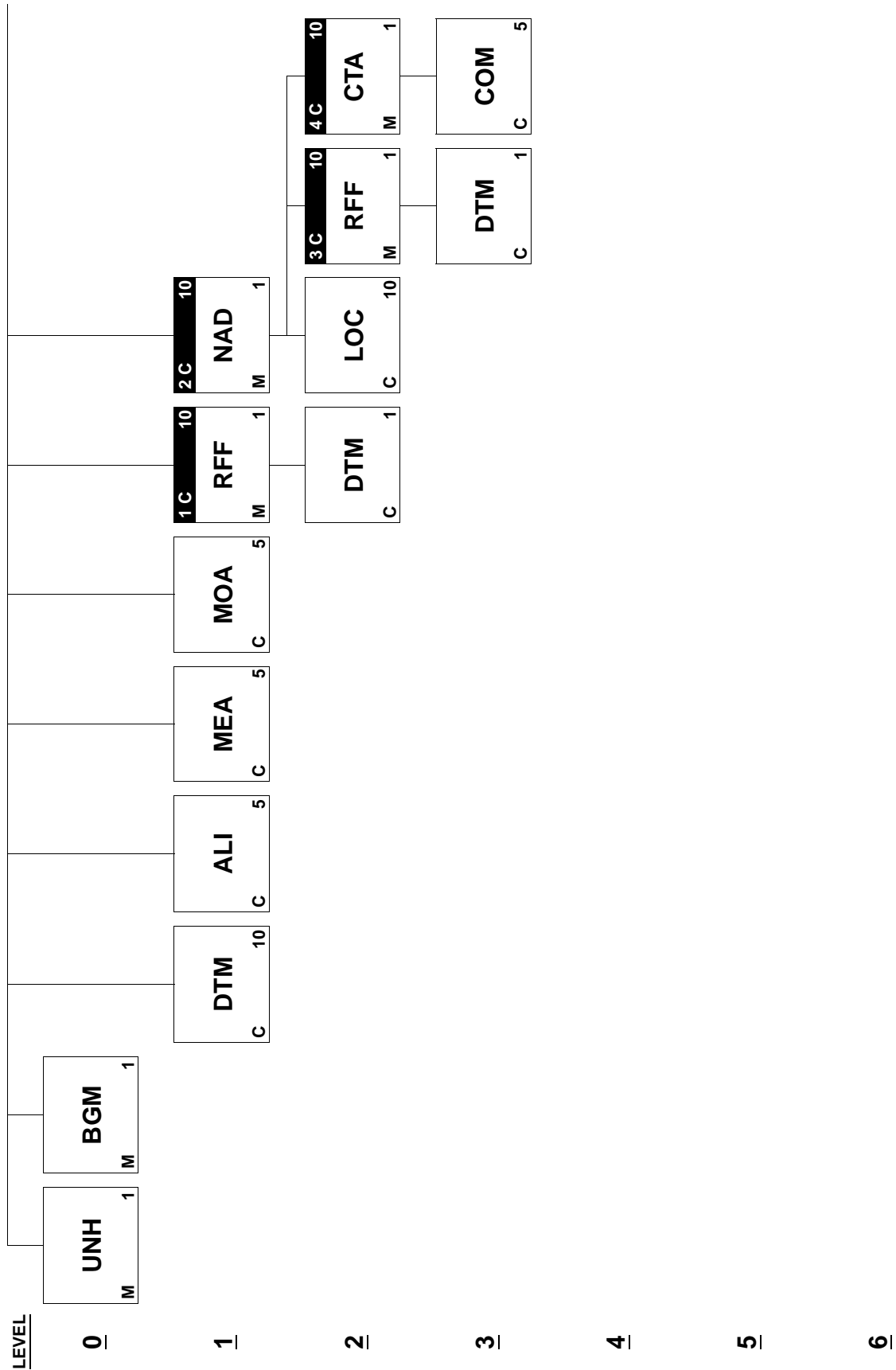
5

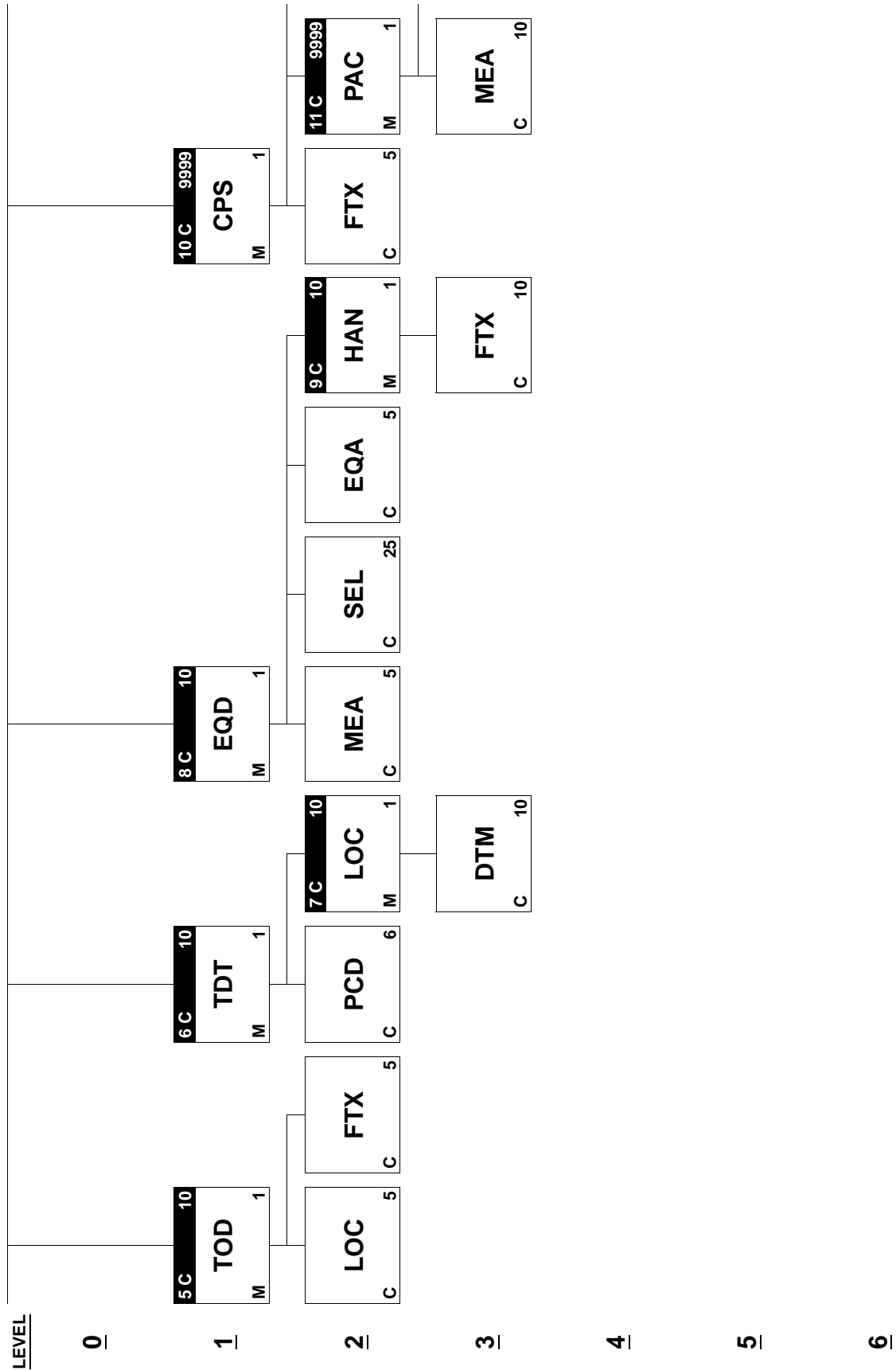
6

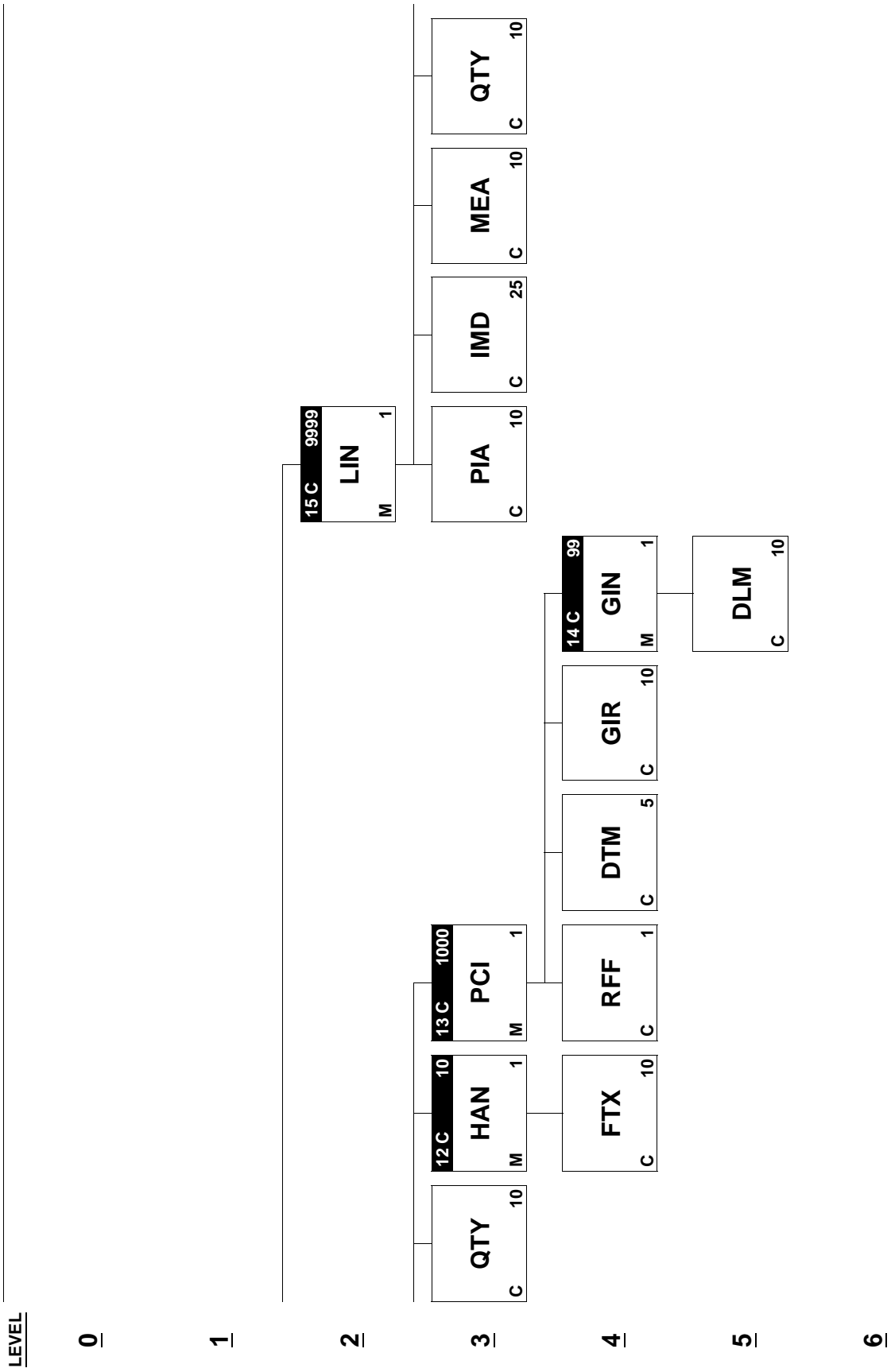










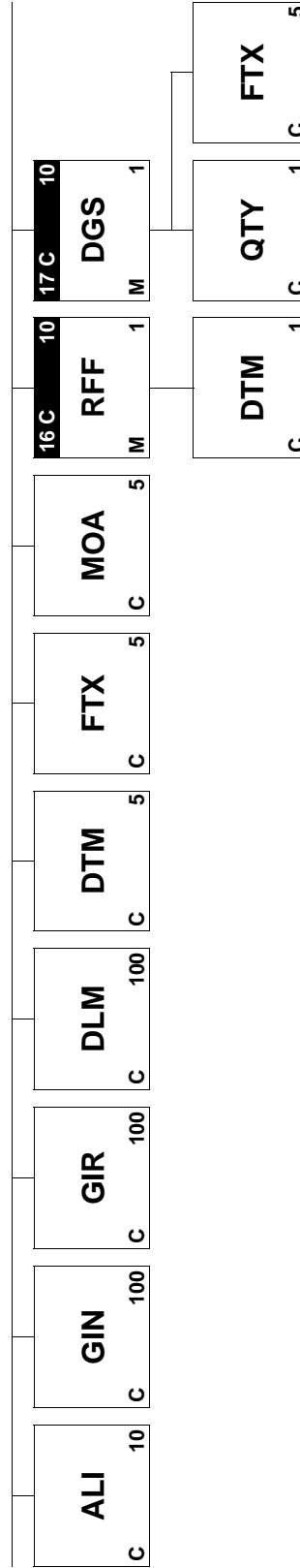


LEVEL

0

1

2



3

4

5

6

LEVEL

0

1

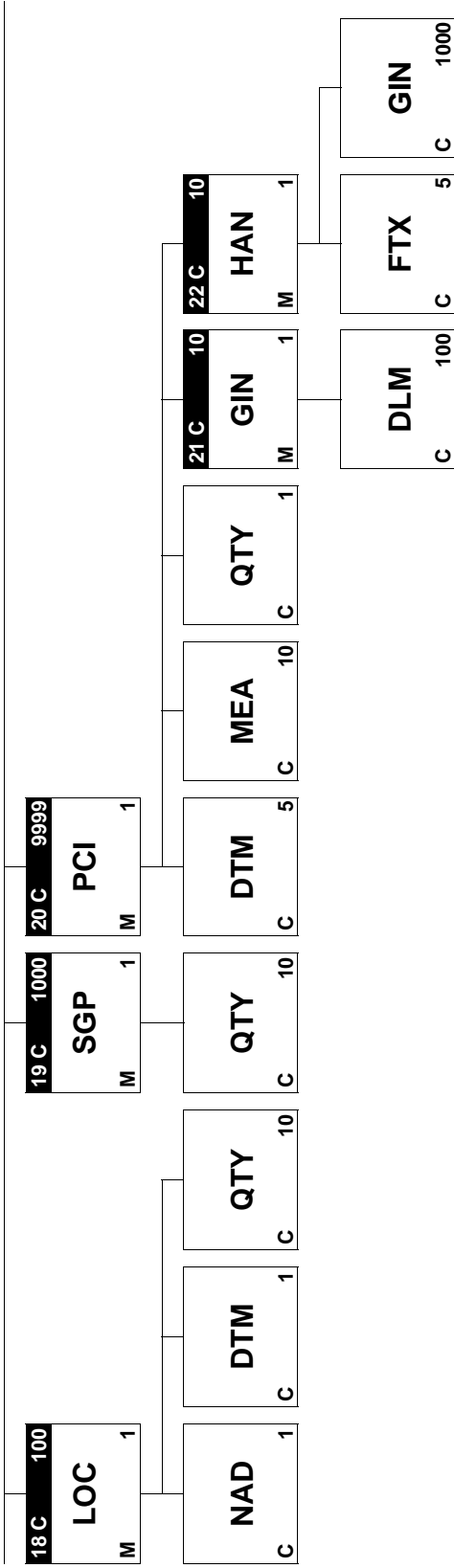
2

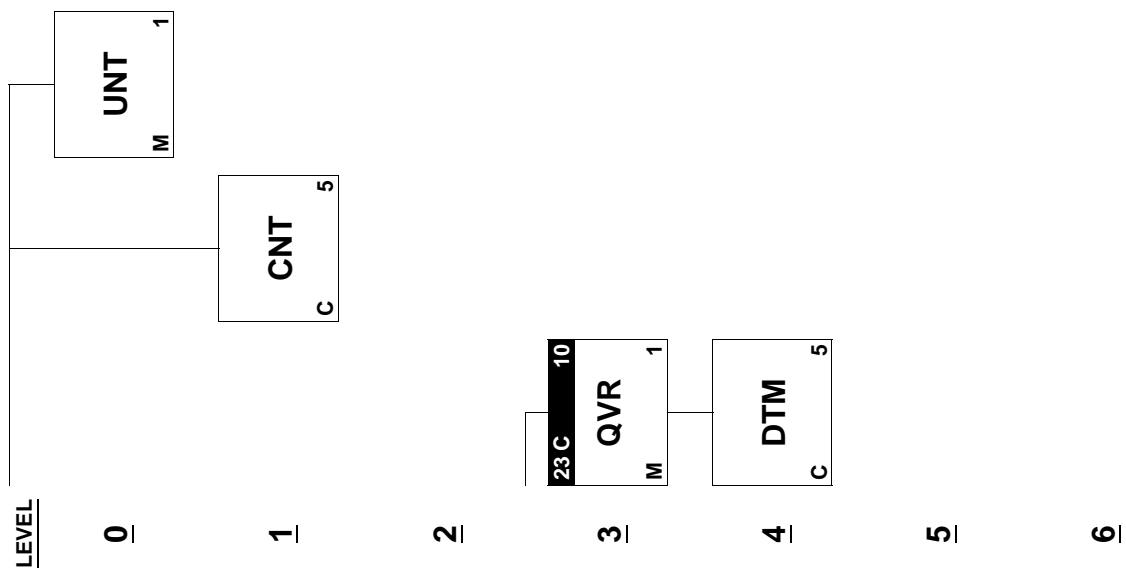
3

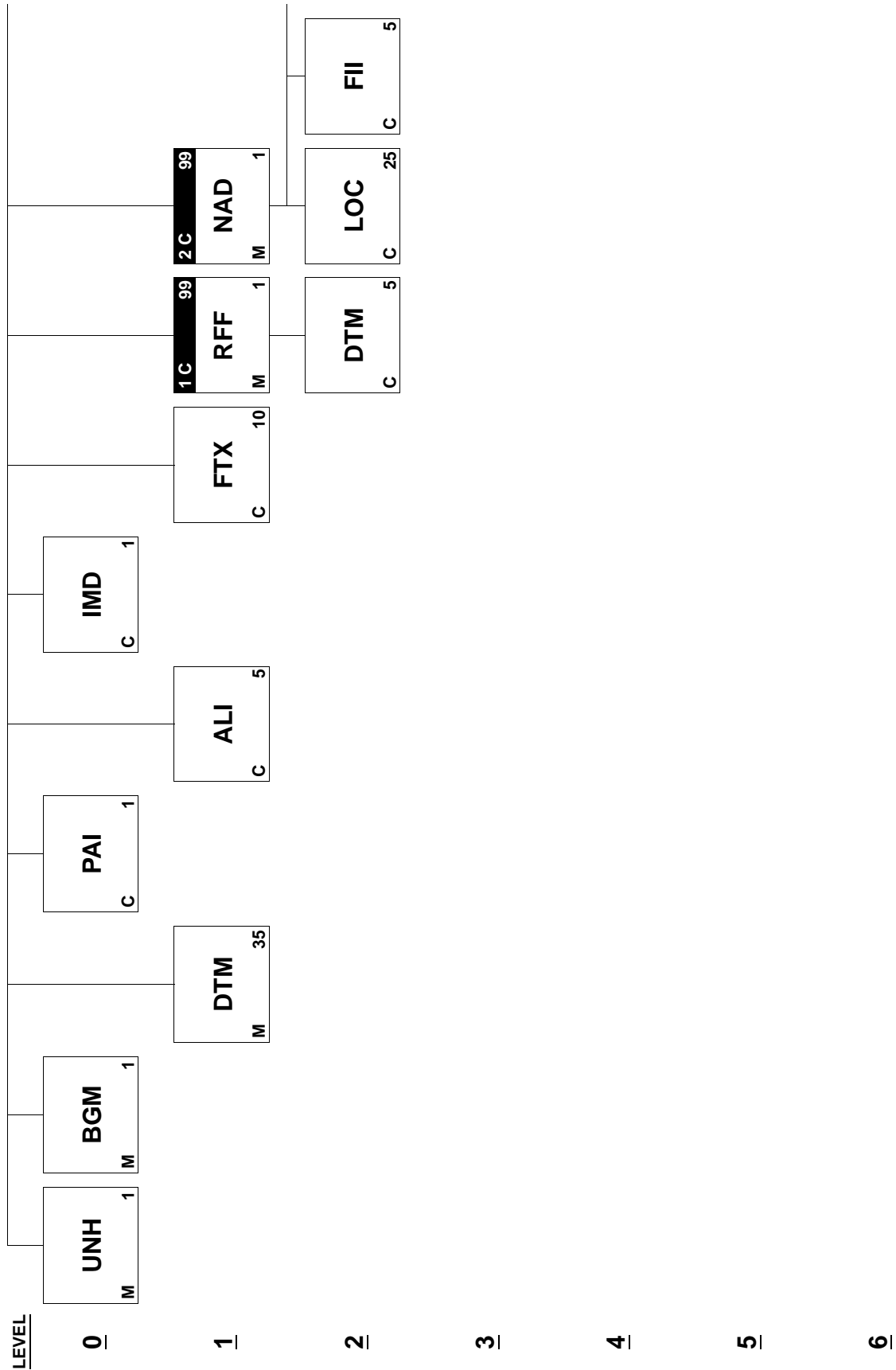
4

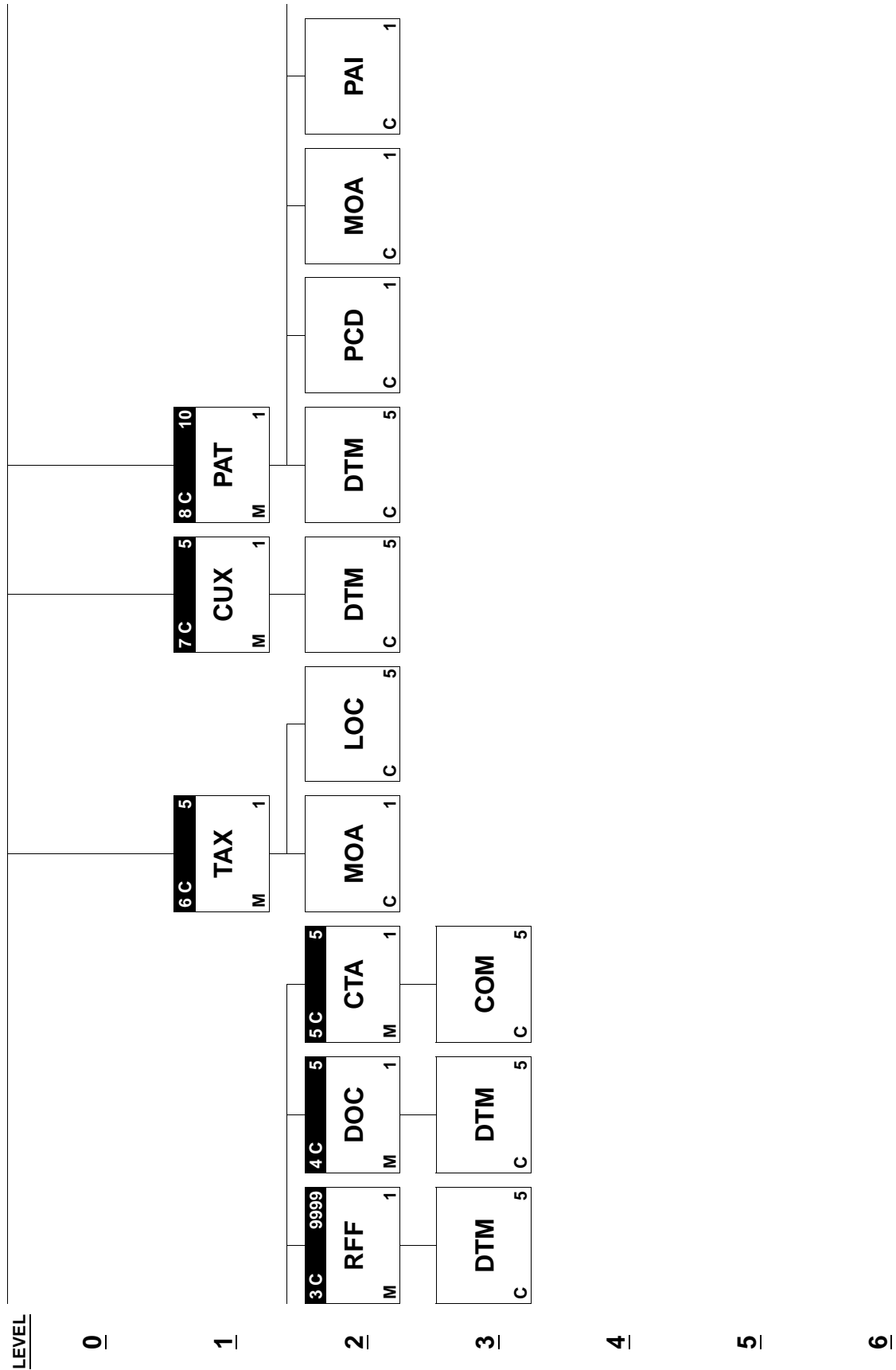
5

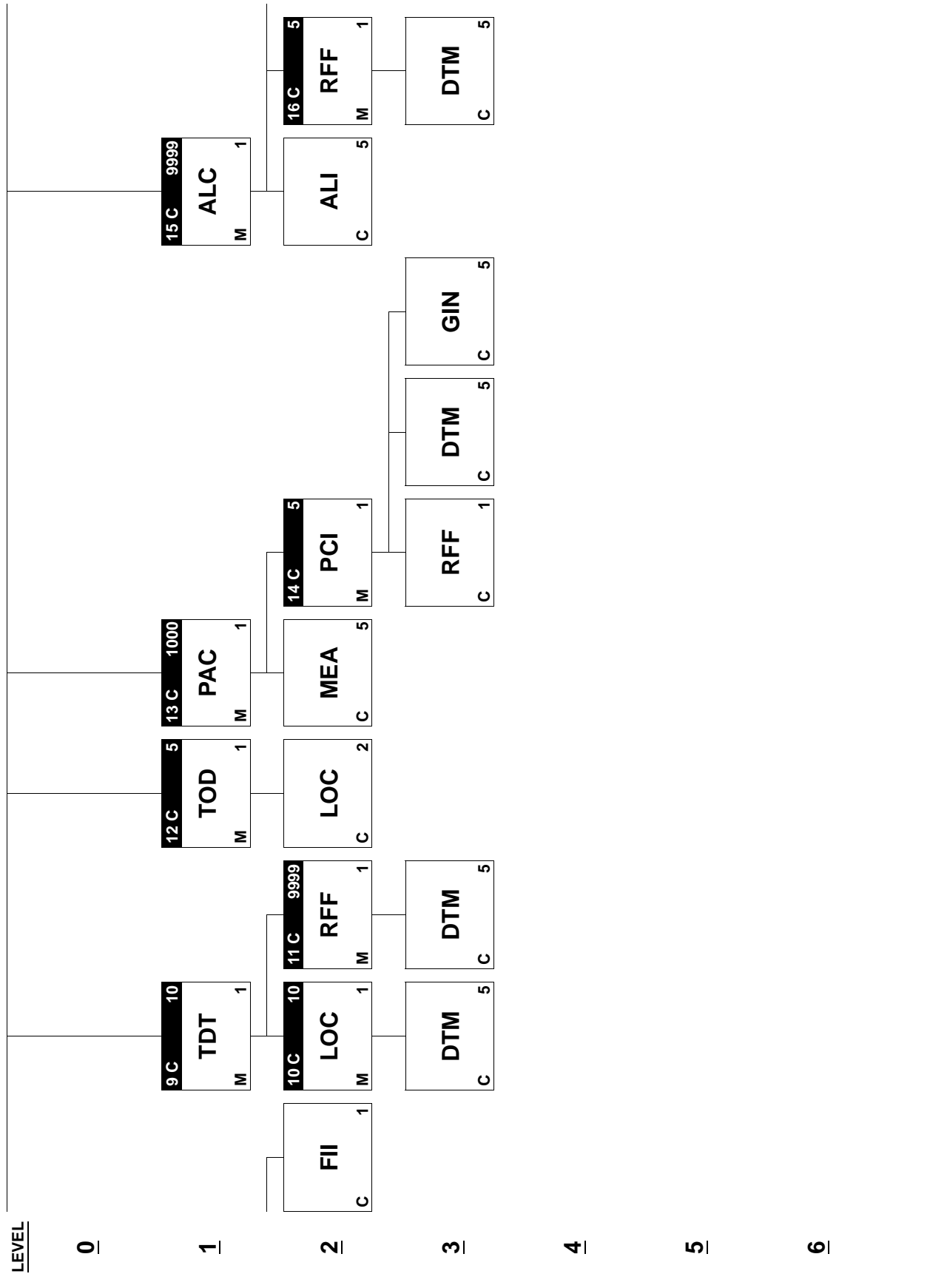
6

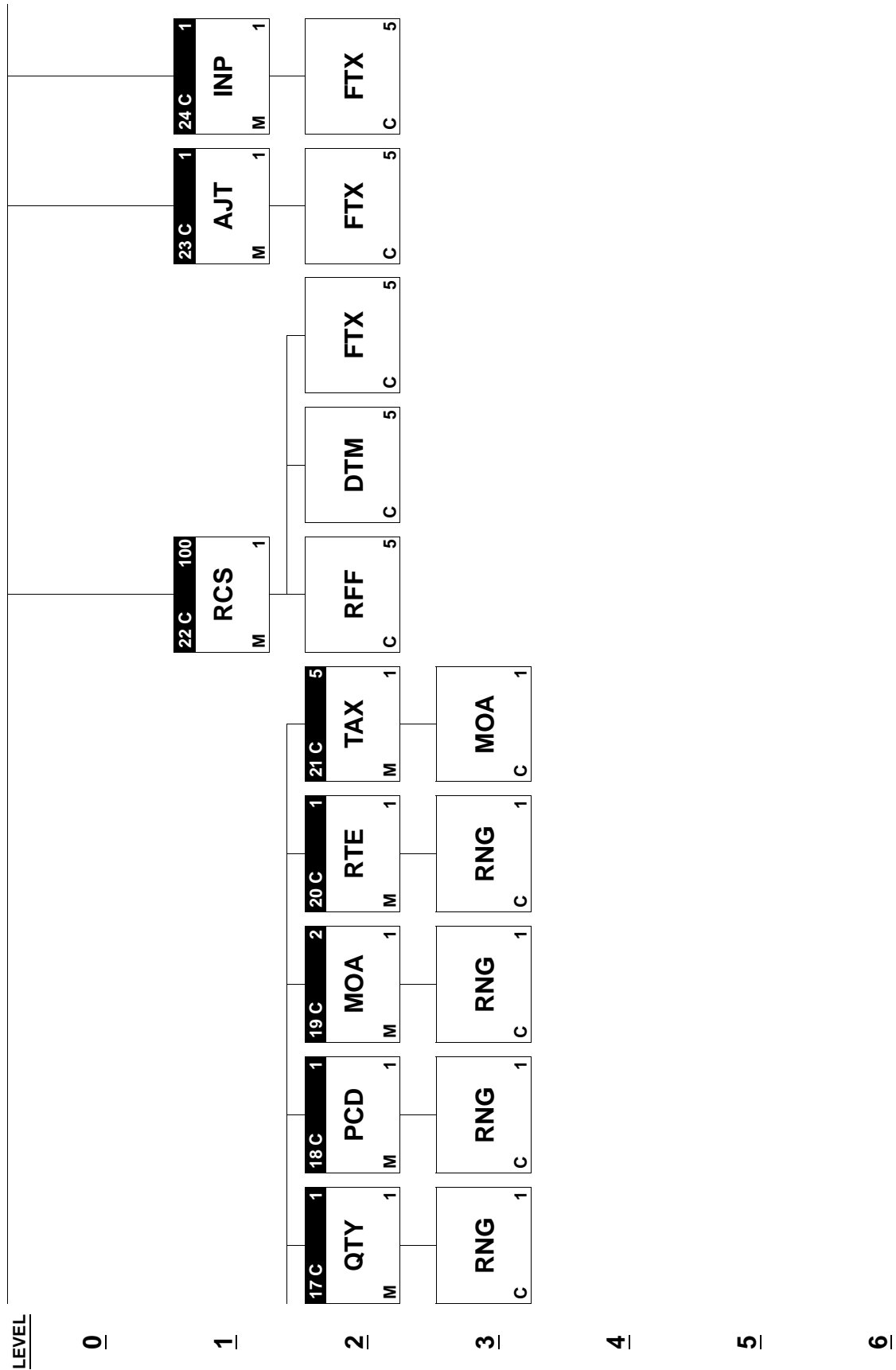


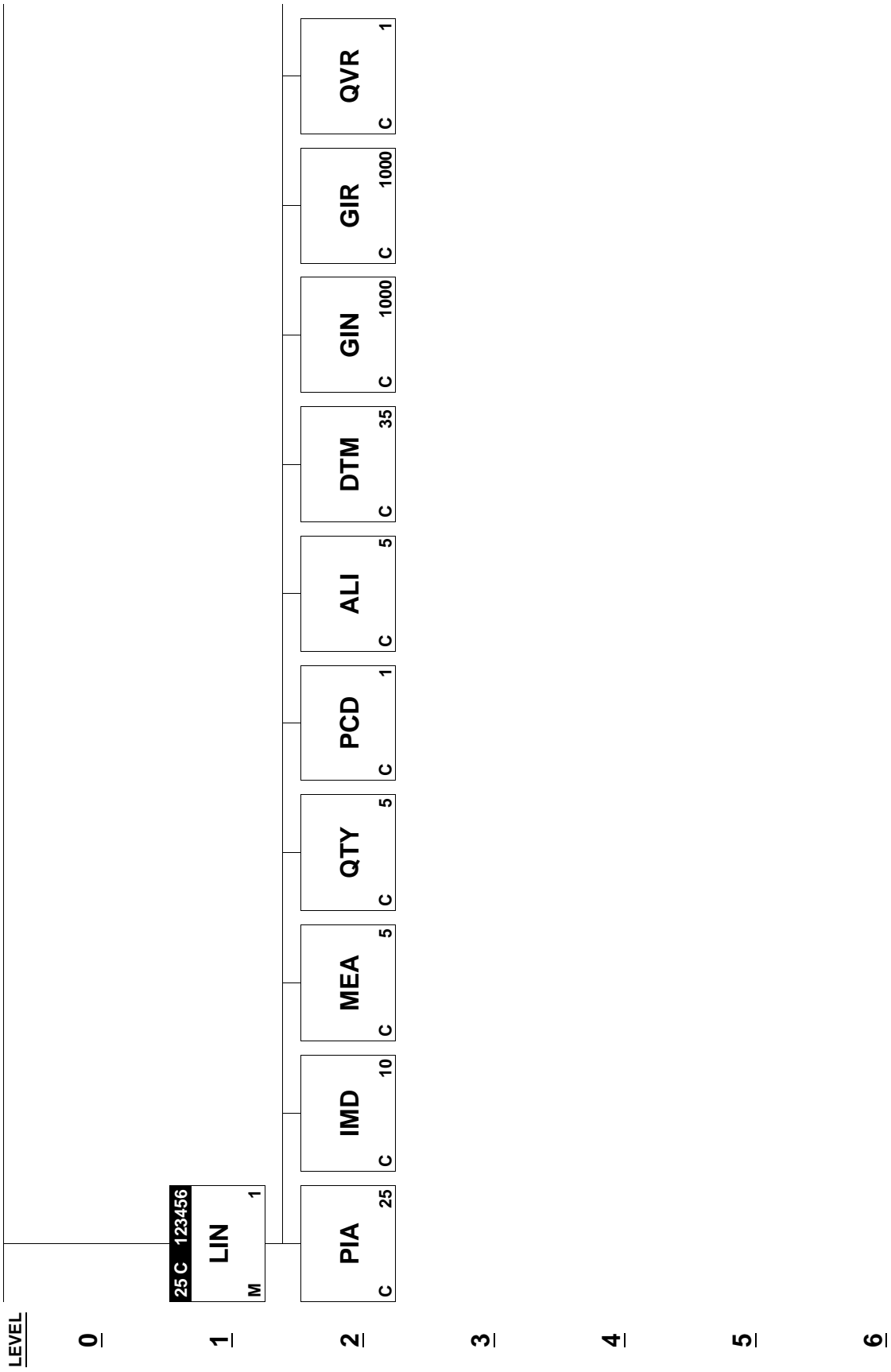




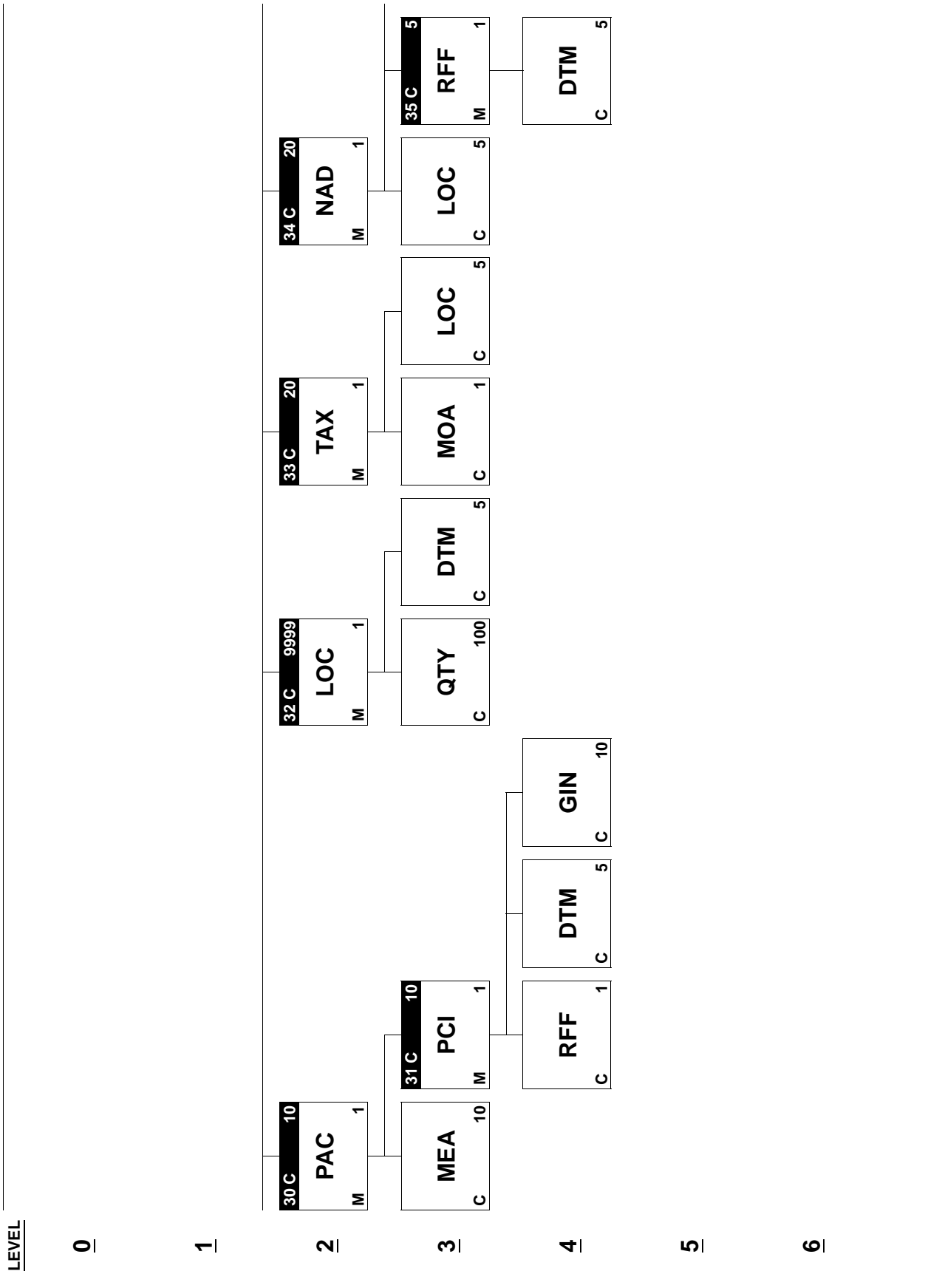


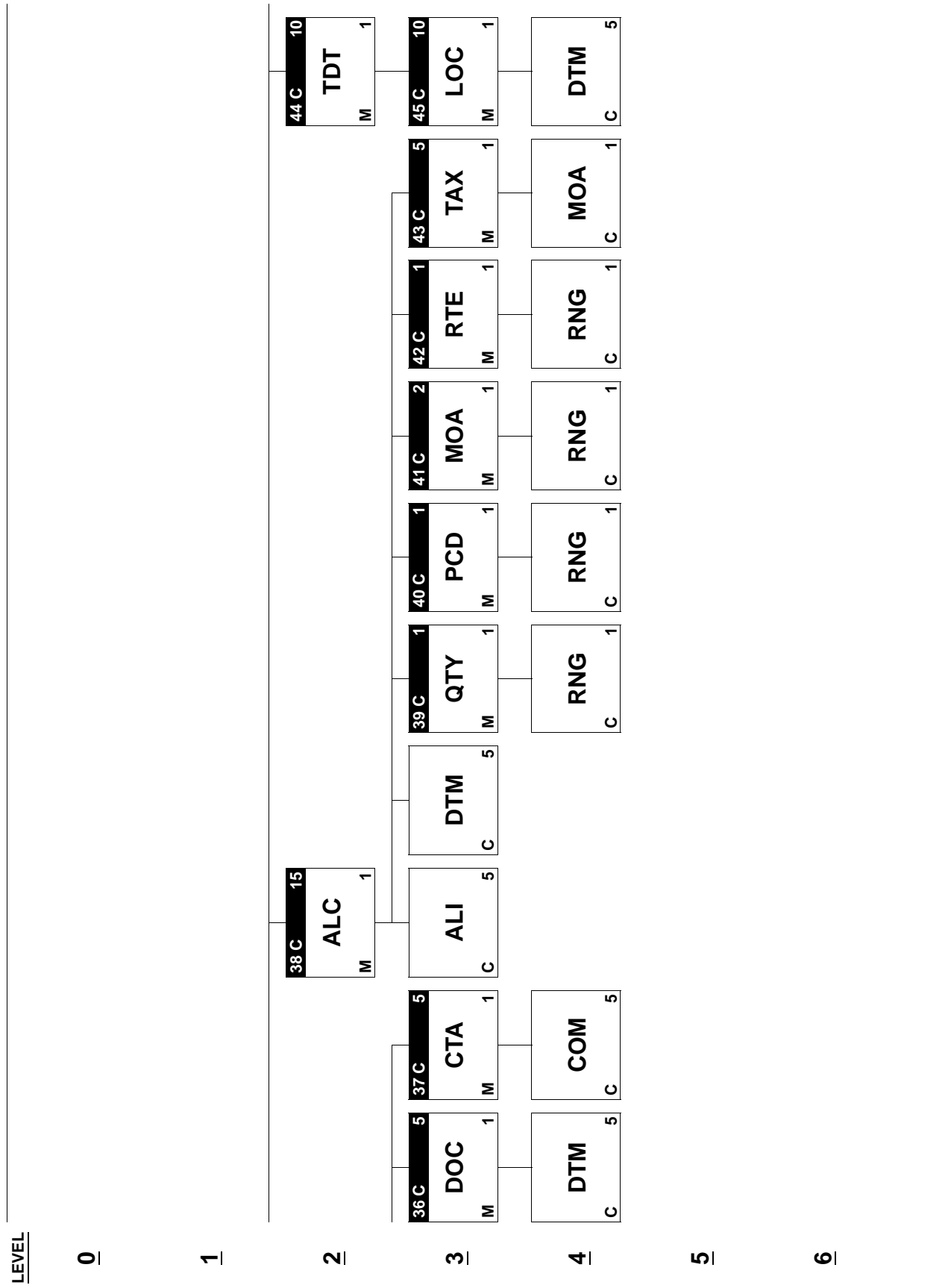


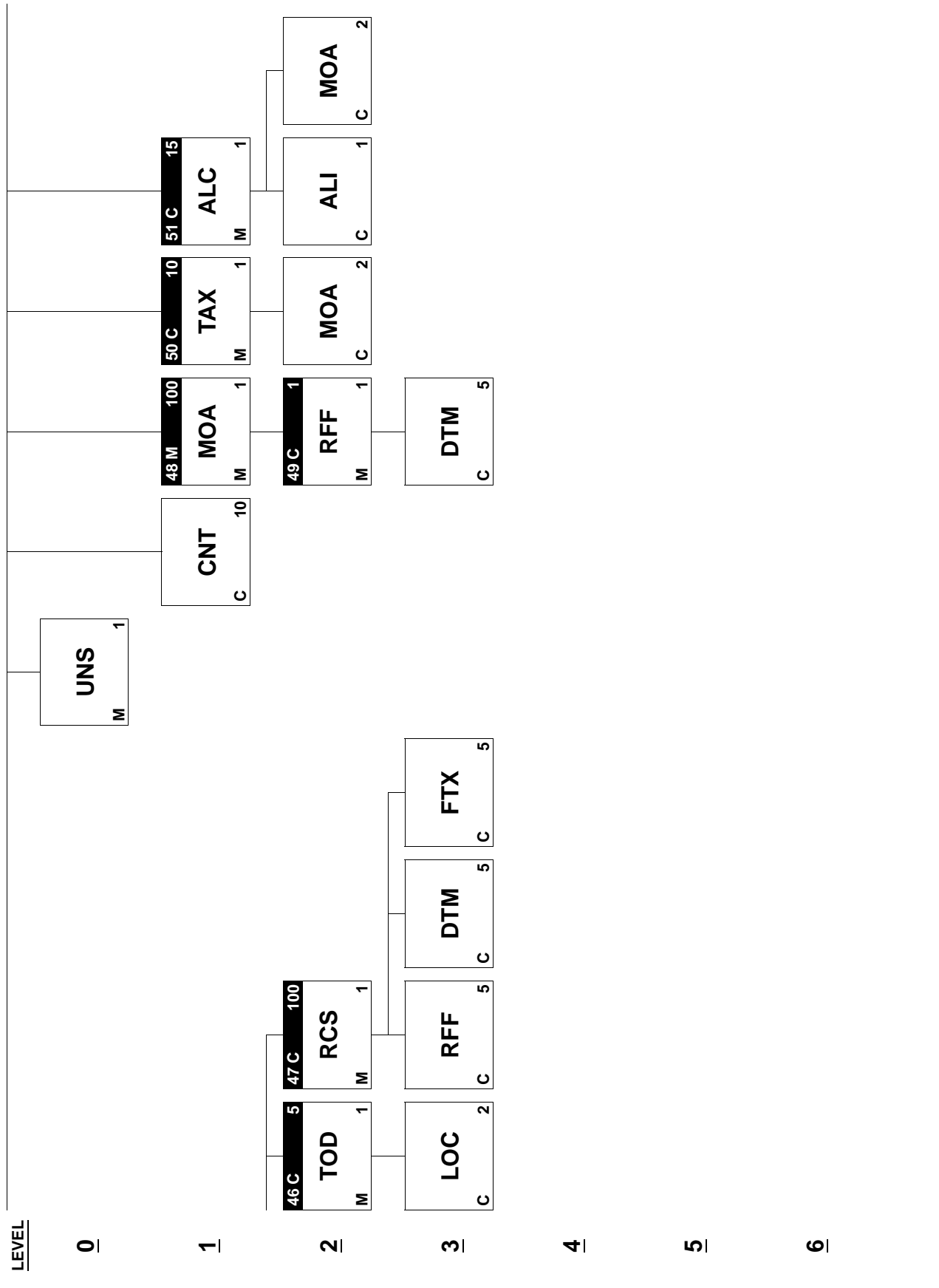


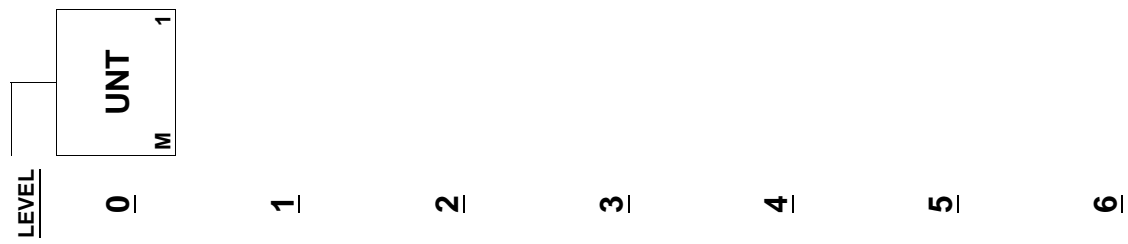












# EXAMPLE

This is a sample invoice message provided by KLM Royal Dutch Airlines.

<b>UNB+UNOA:1+XXXXXXXXXX:</b>	
<b>YY+NLKLM</b>	
<b>KLMIU001:52+930306:0111+K</b>	
<b>LM93001++++1++1'</b>	
<b>UNH+1+INVOICE:91:1:RT:</b>	header with msg reference number
<b>AVN1'</b>	
<b>BGM+380+640337+9'</b>	invoice number
<b>DTM+3:930305:101'</b>	invoice date
<b>NAD+II+123456789:100:16'</b>	dunscode invoice issuer
<b>LOC+4+MMX:145:3'</b>	delivery station
<b>RFF+VA:65425364'</b>	vatnumber invoice issuer
<b>RFF+GN:123456'</b>	chamber of commerce number
<b>NAD+IV+KL:100:3'</b>	iata code invoice receiver
<b>RFF+VA:31425364'</b>	vat number invoice receiver
<b>NAD+RE+7746532:100:16'</b>	dunscode payment receiver
<b>RFF+VA:31487664'</b>	vatnumber payment receiver
<b>NAD+AG+7006532:100:16'</b>	dunscode agent
<b>CUX+2:USD:4'</b>	invoice currency
<b>LIN+1++JETA1:SA:152'</b>	line-item (first)
<b>QTY+117:1000:LT'</b>	delivered quantity
<b>QTY+47:264.178:GA'</b>	priced quantity
<b>DTM+35:930221:101'</b>	delivery date
<b>MOA+38:188.15'</b>	amount in invoice currency
<b>MOA+57:575.757:NLG:10'</b>	amount in pricing currency
<b>PRI+CAL:0.7122::CON:1:</b>	contract price/measure
<b>GA'</b>	
<b>RFF+DQ:692421'</b>	delivery ticket number
<b>RFF+AI:PHKSG'</b>	a/c registration
<b>RFF+AF:KL024'</b>	flightnumber
<b>RFF+CI:INTO STORAGE'</b>	into storage indentification
<b>RFF+OI:978675'</b>	previous invoice number
<b>PAC+5+1++DR'</b>	packaged product
<b>MEA+VOL++LT:1234.123456'</b>	package measure

TAX+7+VAT+++:::777.777+S'	vat
MOA+124:12412412412.412'	vat amount (inv currency)
NAD+AP+LH:100:3'	accepting party
ALC+C++6++AF'	allowance/charge (1rst)
QTY+47:1000:LT'	priced quantity
PCD+2:111.111'	percentage
MOA+8:1.21'	amount in invoicing currency
MOA+57:8.7:SEK:10'	amount in pricing currency
RTE+2:0.87:100:LT'	allowance/charge price per measure
TAX+7+VAT+++:::722.227+S'	vat
MOA+124:12412412412.412'	vat amount allowance/charge
ALC+C++6++SY'	allowance/charge (2cnd)
QTY+47:1000:LT'	priced quantity
PCD+2:211.111'	percentage
MOA+8:1.11'	amount in invoicing currency
MOA+57:8:SEK:10'	amount in pricing currency
RTE+2:0.8:100:LT'	allowance/charge price per measure
TAX+7+VAT+++:::222.227+S'	vat
MOA+124:224.412'	vat amount allowance/charge
LIN+2++JETAL:SA:152'	line item (second)
QTY+117:770:LT'	delivered quantity
QTY+47:203.417:GA'	etc.
DTM+35:930221:101'	
MOA+38:144.87'	
MOA+57:575.757:NLG:10'	
PRI+CAL:0.1722::CON:1: GA'	
RFF+DQ:692424'	
RFF+AI:PHKSG'	
RFF+AF:KL020'	
RFF+CI:INTO STORAGE'	
RFF+OI:67543452'	
PAC+5+1++DR'	
MEA+VOL++LT:1234.123456'	
TAX+7+VAT+++:::777.777+S'	
MOA+124:12412412412.412'	

NAD+AP+LH:100:3'	
ALC+C++6++AF'	
QTY+47:770:LT'	
PCD+2:111.111'	
MOA+8:0.93'	
MOA+57:6.699:SEK:10'	
RTE+2:0.87:100:LT'	
TAX+7+VAT+++:::722.227+S'	
MOA+124:12412412412.412'	
ALC+C++6++SY'	
QTY+47:770:LT'	
PCD+2:211.111'	
MOA+8:0.86'	
MOA+57:6.16:SEK:10'	
RTE+2:0.8:100:LT'	
TAX+7+VAT+++:::222.227+S'	
MOA+124:22412412412.412'	
UNS+S'	summary
MOA+125:222.22'	invoice amount exclusive VAT
MOA+124:124.412'	VAT amount
MOA+39:337.16'	invoice amount inclusive VAT
TAX+7+VAT+++:::733.337+S'	vat (percentage)
MOA+124:124.412:FRF:3'	vat amount in vat currency
UNT+86+1'	# of segments/msg reference no
UNZ+!+KLM93001'	# of messages/batch no

